



# ADSL Router installation guide

This guide provides details of how to start your Internet connection. You can connect quickly and simply. Follow the step-by-step indications.

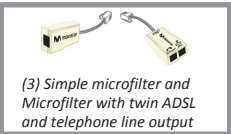
## Contents of the box



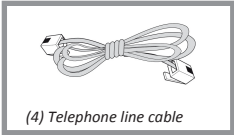
(1) ADSL Router



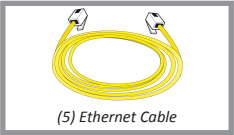
(2) Direct current adapter



(3) Simple microfilter and Microfilter with twin ADSL and telephone line output



(4) Telephone line cable



(5) Ethernet Cable



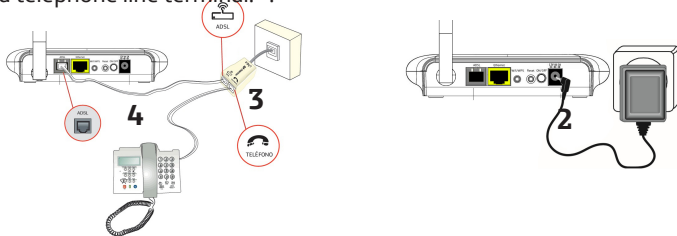
(6) Guarantee card

## Start using your ADSL...

### 1. Installation and connection

Connect the twin output microfilter (3) to the jack selected for connecting the router and the phone to the jack with the symbol as shown in the figure. Connect the grey telephone line cable (4) to the outlet on the twin microfilter (3) marked with the symbol (or ADSL) and to the ADSL jack on the ADSL Router.

Connect the simple microfilter between another telephone terminal and another household telephone line terminal. .



Connect the power cable (2) to the mains and the 12 V 1A jack on ADSL Router.

### 2. Turning on the router



Turn the ADSL Router on by pressing the switch on the rear panel to the ON position. Wait a few moments until the LEDs coincide with the following:

LED	Current status	Meaning
Power	Turned on (green)	Power status.
Ethernet	Turned off	Ethernet connection status.
Wifi	Turned on (green)	Wireless network status.
WPS	Turned off	WPS connection status.
ADSL	Turned on (green)	Connection established with the central system. You will see a green flashing light whilst establishing the connection.
Internet	Turned on (green)	An IP address has been assigned to the router. You will see a flashing green light when there is traffic.

Routers supplied by Movistar are optimised for establishing an internet connection without the need for installations or configurations.

Movistar can automatically perform a remote update of your equipment's software at any time, especially when installing it for the first time, to offer you better

service and operation. During said process, Power, Ethernet, Wifi, WPS, ADSL and Internet LEDs will cyclically flash green. A few minutes later, the LEDs will reach the status described in table above, indicating the end of the process.

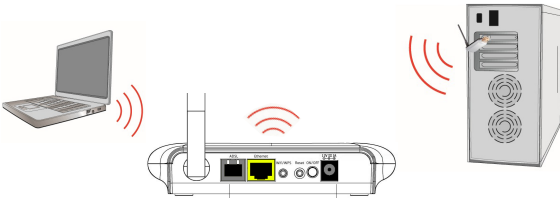
**Warning:** never turn off the equipment or disconnect it from the mains whilst you are performing said update as it could damage the system.

### 3. Connect your computer

You can connect your computer to the router using an Ethernet cable or a wireless network. You can also have a device connected to the router using an Ethernet cable and others using a wireless network at the same time.

#### Wireless network connection

You may use the wireless connection whenever your computer is equipped with a wireless adapter or has one installed. Your ADSL Router comes from the factory with the wireless network enabled (Wifi LED on the front panel static green).



#### WPS quick connection

If you have a wireless client that supports WPS, you can establish the wireless connection using this simple wireless setup method. Press the Wifi/WPS button on the rear panel of the router for over five seconds and then press the client WPS button for another 2 minutes.

#### Windows wireless client connection

You can search for available wireless networks. Select the network whose ID (SSID) appears on your label on the underside of your router a and press **Connect**. Enter the security key located on the router label. **IMPORTANT.** The router's wireless security key is WPA2-PSK and is in alphanumeric format. Make sure you enter said security key as it appears on the label.

Configuración de fábrica para la red inalámbrica:

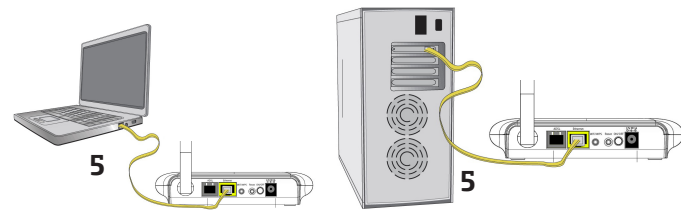
Wifi: Identificador (SSID):

Seguridad: WPA2-PSK

Clave:

Ethernet cable connection

Connect the yellow Ethernet cable (5) to the computer's Ethernet card and the jack on the router marked Ethernet.  
Turn on the computer. The Ethernet LED will come on after a few seconds indicating that the connection is correct. This indicator will flash green when it detects activity.



Congratulations, you can browse the internet with your ADSL!

For further information, go to our website ([www.movistar.es/adsl/descarga](http://www.movistar.es/adsl/descarga)) and search for your ADSL Router to download all full and detailed documentation.

Advanced configuration options

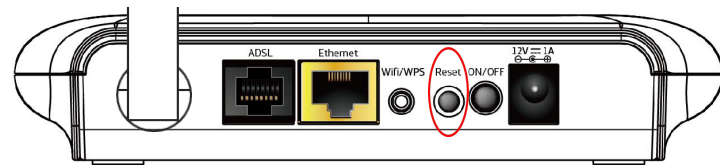
There are several possibilities of configuring your router's advanced options:

- Using the remote configuration Portal that can be accessed through [www.movistar.es/configuramirouter](http://www.movistar.es/configuramirouter)
- Or using the router's Web portal, accessing the address associated with the equipment (<http://192.168.1.1>) with the browser.

You have all information on this advanced option configurer in the full documentation on our website.

Restoring factory values

1. With the router turned on, press the router's Reset button with the tip of a ballpoint pen for at least 10 seconds and then release it.
2. After about 30 seconds, your router will have factory configuration again.



Customer service

Customer service is available over the phone and also on the Internet:  
[www.movistar.es](http://www.movistar.es)

**Movistar's Technical Assistance Centres where you can use the equipment guarantee:**  
Public: **1004**  
SMEs and professionals: **900 10 10 10**

(\*) You can also use the phone numbers above to consult any Guarantee/Maintenance

Additional information

**Telefónica de España, S.A.U. informs you**  
We would like to thank you for the trust you have shown in Movistar by purchasing one of our devices. For further information, please call the following number free of charge:

- Public Customer Service line (1004)
- Assistance Centre of Professionals and Companies (900101010)
- Assistance Centre for Companies (900120900)

Where you will be attended by our assessors or you can visit Movistar's commercial page: [www.movistar.es](http://www.movistar.es)  
To obtain information on after-sales services, see the equipment guarantee card. Finally, for written claims referring to this sale, please go to Telefónica de España S.A.U, Gran Vía 28, 28013 Madrid.

Environmental recycling

Never dispose of your ADSL Router in household waste. Ask for information from your local council on correct disposal of your device to prevent harming the environment. Always respect the standards in force on the subject. Lawbreakers are subject to the sanctions and measures established by law. The cardboard box, plastic contained in the package and parts comprising the device can be recycled according to the standards in force in Spain regarding recycling.



The container symbol with a cross located on the apparatus means that when the equipment has come to the end of its service life, it should be taken to pre-established collection centres and must be treated separately to other urban waste.

Telefónica de España SAU, Gran Vía 28, Commercial Registration: Sheet M-213180, Page 6, Volume 13170, Entry 1, Taxpayer's No.: A-82018474. Subscribing entity of the Consumer Arbitration System

Declaration of conformity



**Declarant:**  
Name or company name: Zoovel Technologies S.L  
Address: Paseo de la Castellana ,259c. Torre Cristal - Planta 18. 28046. Madrid  
Telephone: +34 911 190 523  
CIF: B75030817

**It hereby declares under its responsibility that the product:**  
Equipment: ADSL Router  
Brand name: Telefónica  
Model: ZOVEL Z-201  
Country of manufacture: China  
Manufacturer: Zoovel Netis S.L.

It complies with the technical specifications applicable at the time, pursuant to European Parliament and Council Directive R&TTE 1999/5/EC, dated 9th March 1999, transposed to Spanish law through RD1890/2000, of 20th November 2000 and in particular with:

EN300328 V1.8.1 (2012-06)	Wideband transmission systems; Data transmission equipment operating in the 2,4 GHz ISM band and using wide band modulation techniques; Harmonized EN covering the essential requirements of article 3.2 of the R&TTE Directive.
EN301489-1 V1.9.2 (2011-09)	ElectroMagnetic Compatibility (EMC) standard for radio equipment and services; Part 1: Common technical requirements
EN 301489-17 V2.2.1	ElectroMagnetic Compatibility (EMC) standard for radio equipment; Part 17: Specific conditions for Broadband Data Transmission Systems
EN 50385:2002	Product standard to demonstrate the compliance of radio base stations and fixed terminal stations for wireless telecommunication systems with the basic restrictions or the reference levels related to human exposure to radio frequency electromagnetic fields (110 MHz - 40 GHz) - General public
EN 60950-1:2006+A1 +A11+A12	Information technology equipment - Safety - Part 1: General requirements

The product complies with Energy Efficiency Directive ErP 2009/125/CE and its Regulation 278/2009 regarding ecological design requirements for energy-related products.

It also complies with RD 208/2005 (Directive 2012/19/EU, WEEE), regarding waste from electrical and electronic equipment and its management, and with RD-219/2013 (Directive 2011/65/E, RoHS) regarding restrictions for the use of certain hazardous substances on electrical and electronic equipment.

The undersigned, as the manufacturer's representative, hereby declares under its sole responsibility, that the product referred to in this declaration complies with the regulations and standards mentioned above.

Madrid, 25th January 2014

*Aquiles Paternotte*

Signed. Aquiles Paternotte. CEO

CE0560

This equipment is prepared for connection to the analogical network of Telefónica de España, S.A.U., has access to the ADSL service and is authorised exclusively for use in Spain.