

**BASIC CONFIGURATION GUIDE**

**FOR 1 PORT ETH- ADSL2+**

**OBSERVA TELECOM - AR1061**

Version 1.2, 2008-07-31

# **INDEX**

<b>1. INTRODUCTION .....</b>	<b>3</b>
<b>2. BASIC OPERATIONS WITH 1 PORT ETH-AR1061 MODEM</b>	
<b>2.1.CHANGING PASSWORD .....</b>	<b>4</b>
<b>2.2.BASIC CONFIGURATIONS IN THE MODEM</b>	
<b>2.2.1 DYNAMIC MULTI-PC.....</b>	<b>5</b>
<b>2.2.2 STATIC MULTI-PC .....</b>	<b>7</b>
<b>2.2.3 DYNAMIC SINGLE-PC.....</b>	<b>9</b>
<b>2.2.4 STATIC SINGLE-PC.....</b>	<b>11</b>
<b>2.3. OPENING PORTS .....</b>	<b>13</b>
<b>2.4. UPGRADE FIRMWARE.....</b>	<b>13</b>

## 1. INTRODUCTION

This document offers an orientation to configure the Router 1 Port Ethernet ADSL/ADSL2+ Observa Telecom-AR1061, through the Web page.

To configure the ADSL service provided by your ISP, we strongly recommend you to follow the indications is the User's Manual included in this kit. This guide is a complement to the User's Manual, explaining how to perform the different tasks using the Web Configuration Tool, instead of using the Wizard Configuration Tool included in the kit for Windows O.S. **(ONLY FOR ADVANCED USERS)**.

**It is recommended to use the Wizard for Configuration.**

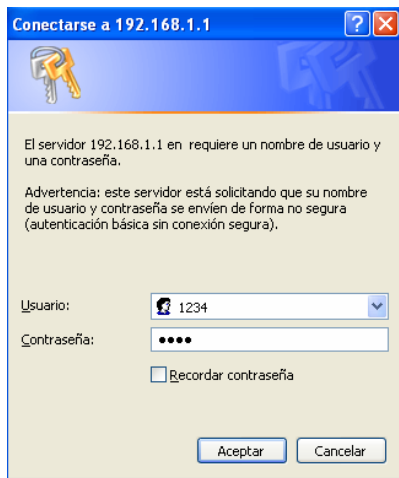
<p><b>WARNING:</b> Before using the tools that the manufacturer provides you regarding this product, and regarding which Telefonica informs you with merely orientative purpose, we remind you that Telefonica Spain won't offer any technical support upon them.</p>
---

## 2. BASIC OPERATIONS WITH 1 PORT ETH-AR1061 MODEM

### 2.1.CHANGING PASSWORD

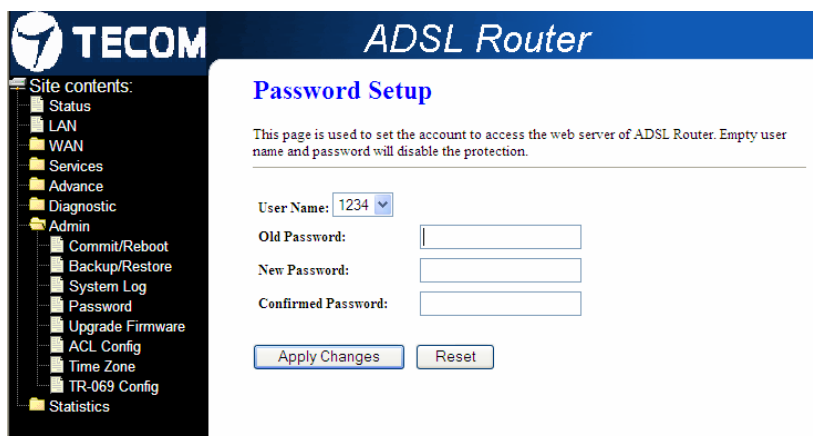
The first time you access the MODEM, you will use the default password in the system for admin level:

User: 1234  
Password: 1234



There are 2 levels for authentication: **1234** (administrator) y **user** (user). To change the password, enter the Web Admin-->Password and select User Name (level to which you wish to change the password): 1234 or user

Type the current password (Old Password), the new one (New Password), and repeat (Confirmed Password):



## 2.2. BASIC CONFIGURATIONS IN THE MODEM:

### LAN Configuration:

Enter the Web page *LAN* to configure your LAN settings:

The screenshot shows the 'LAN Interface Setup' page of a TECOM ADSL Router. The page title is 'LAN Interface Setup'. Below the title, there is a description: 'This page is used to configure the LAN interface of your ADSL Router. Here you may change the setting for IP address, subnet mask, etc..'. The configuration fields are as follows:

Interface Name:	br0
IP Address:	192.168.1.1
Subnet Mask:	255.255.255.0
<input checked="" type="checkbox"/> Secondary IP	
IP Address:	192.168.249.1
Subnet Mask:	255.255.255.252
DHCP pool:	<input checked="" type="radio"/> Primary LAN <input type="radio"/> Secondary LAN

Buttons: Apply Changes, Undo

Field	Description
<b>IP Address</b>	The IP address your LAN hosts use to identify the device's LAN port.
<b>Subnet Mask</b>	LAN subnet mask.
<b>Secondary IP</b>	The secondary IP address assignment for the device's LAN port.
<b>DHCP pool</b>	Click where you want to apply the DHCP pool: on Primary or Secondary LAN

### 2.2.1. DYNAMIC MULTI-PC

Multi-PC configuration will let you create network made of a set of Computers in your LAN, with internet access from any of them.

With *dynamic* addressing (PPPoE), your PC will obtain the IP address that needs to access the Internet dynamically, each time it connects, and during the time that the connection remains active. The next time it connects, it will be assigned a new IP address.

This configuration provides you advantage regarding security, because using NAT (Network Address Translation), the private addresses of the PCs in your network are not seen outside, but are translated into a single public IP address and valid from Internet.

### WAN Configuration:

Enter the Web page *WAN* → *Channel Config* and fill in all the following fields:

VPI/VCI: associated to that PVC  
Encapsulation: LLC  
Channel Mode: PPPoE

Enable NAPT: enabled  
Admin Status: Enable

PPP Settings:

User Name: type the user name provided by your ISP to name your connection. Default is *adslppp@telefonicanetpa*  
Password: default is *adslppp*  
Type: Continuous (Always on)  
Idle Time (min): empty

WAN IP Settings:

Default Route: Enable

**WAN Configuration**

This page is used to configure the parameters for the channel operation modes of your ADSL Modem Router.

VPI: 8 VCI: 32 Encapsulation:  LLC  VC-Mux Channel Mode: PPPoE

Enable NAPT:  Admin Status:  Enable  Disable

PPP Settings: User Name: adslppp@telefonicanetpa Password:

Type: Continuous Idle Time (min):

WAN IP Settings: Type:  Fixed IP  DHCP

Local IP Address:  Remote IP Address:

Subnet Mask:  Unnumbered

Default Route:  Disable  Enable

Current ATMVC Table:

Select	Inf	Mode	VPI	VCI	Encap	NAPT	IP Addr	Remote IP	Subnet Mask	User Name	DRoute	Status	Actions
<input checked="" type="radio"/>	ppp0	PPPoE	8	32	LLC	On				adslppp@telefonicanetpa	On	Enable	

When you fill in all the fields, click *Add* button.

Enter the Web page *WAN → ATM Settings* and select the QoS parameters associated to the PVC:

**ATM Settings**

This page is used to configure the parameters for the ATM of your ADSL Router. Here you may change the setting for VPI, VCI, QoS etc ...

VPI: 8 VCI: 32 QoS: UBR

PCR: 6000 CDVT: 0 MBS:

Current ATMVC Table:

Select	VPI	VCI	QoS	PCR	CDVT	SCR	MBS
<input checked="" type="radio"/>	8	32	UBR	6000	0	---	---

Enter the Web page *Services* → *DHCP Settings* to activate your modem as DHCP Server and act as IP address Server into the range or pool address you select:

**TECOM ADSL Router**

**DHCP Settings**

This page be used to configure DHCP Server and DHCP Relay.

DHCP Mode:  None  DHCP Relay  DHCP Server

**DHCP Server**  
Enable the DHCP Server if you are using this device as a DHCP server. This page lists the IP address pools available to hosts on your LAN. The device distributes numbers in the pool to hosts on your network as they request Internet access.

LAN IP Address: 192.168.1.1 Subnet Mask: 255.255.255.0

IP Pool Range:  -

Max Lease Time:  seconds (-1 indicates an infinite lease)

Domain Name:

Gateway Address:

DNS option:  Use DNS Relay  Set Manually

DNS1:

DNS2:

DNS3:

## 2.2.2. STATIC MULTI-PC

This configuration mode differs from the previous one in that your group of PCs will be assigned a fixed (static) IP address to access the Internet.

Enter the Web page *WAN* → *Channel Config* and fill in all the following fields:

VPI/VCI: associated to that PVC

Encapsulation: LLC

Channel Mode: 1483 Routed

Enable NAPT: Enable

Admin Status: Enable

WAN IP Settings:

Type: Fixed IP

Local IP Address: static IP address provided by your ISP

Remote IP Address: static Gateway IP address

Subset Mask: subnet mask provided by your ISP

Default Route: Enable

**WAN Configuration**

This page is used to configure the parameters for the channel operation modes of your ADSL Modem Router.

VPI: 8 VCI: 35 Encapsulation:  LLC  VC-Mux Channel Mode: 1483 Routed

Enable NAPT:  Admin Status:  Enable  Disable

PPP Settings: User Name: Password: Type: Continuous Idle Time (min):

WAN IP Settings: Type:  Fixed IP  DHCP Local IP Address: 172.26.224.172 Remote IP Address: 172.26.224.1 Subnet Mask: 255.255.254.0 Unnumbered  Default Route:  Disable  Enable

Current ATM VC Table:

Select	Inf	Mode	VPI	VCI	Encap	NAPT	IP Addr	Remote IP	Subnet Mask	User Name	DRoute	Status	Actions
<input checked="" type="radio"/>	vc0	rt1483	8	35	LLC	On	172.26.224.172	172.26.224.1	255.255.254.0		On	Enabl	

Enter the Web page *WAN* → *ATM Settings* and select the QoS parameters associated to that PVC:

**ATM Settings**

This page is used to configure the parameters for the ATM of your ADSL Router. Here you may change the setting for VPI, VCI, QoS etc ...

VPI: 8 VCI: 32 QoS: UBR

PCR: 500 CDVT: 0 SCR: MBS:

Current ATM VC Table:

Select	VPI	VCI	QoS	PCR	CDVT	SCR	MBS
<input checked="" type="radio"/>	8	32	UBR	500	0	--	--

Enter the Web page *Services* → *DHCP Settings* to activate your modem as DHCP Server and act as IP address Server into the range or pool address you select:



**TECOM ADSL Router**

**DHCP Settings**

This page be used to configure DHCP Server and DHCP Relay.

DHCP Mode:  None  DHCP Relay  DHCP Server

**DHCP Server**  
 Enable the DHCP Server if you are using this device as a DHCP server. This page lists the IP address pools available to hosts on your LAN. The device distributes numbers in the pool to hosts on your network as they request Internet access.

LAN IP Address: 192.168.1.1 Subnet Mask: 255.255.255.0

IP Pool Range:  -

Max Lease Time:  seconds (-1 indicates an infinite lease)

Domain Name:

Gateway Address:

DNS option:  Use DNS Relay  Set Manually

DNS1:

DNS2:

DNS3:

### 2.2.3. DYNAMIC SINGLE-PC

With this configuration your PC will be directly connected to the Internet, as it doesn't use NAT. It is strongly recommended to make use of some protection as firewall, antivirus in your PC.

Enter the Web page *WAN* → *Channel Config* and fill in all the following fields:

VPI/VCI: associated to that PVC  
 Encapsulation: LLC  
 Channel Mode: 1483 Bridged  
 Enable NAPT: Disable  
 Admin Status: Enable

**TECOM ADSL Router**

**WAN Configuration**

This page is used to configure the parameters for the channel operation modes of your ADSL Modem Router.

VPI: 8 VCI: 32 Encapsulation:  LLC  VC-Mux Channel Mode: 1483 Bridged  
 Enable NAPT:  Admin Status:  Enable  Disable

PPP Settings: User Name:  Password:   
 Type: Continuous Idle Time (min):

WAN IP Settings: Type:  Fixed IP  DHCP  
 Local IP Address:  Remote IP Address:   
 Subnet Mask:  Unnumbered   
 Default Route:  Disable  Enable

Current ATM VC Table:

Select	Inf	Mode	VPI	VCI	Encap	NAPT	IP Addr	Remote IP	Subnet Mask	User Name	DRoute	Status	Actions
<input checked="" type="radio"/>	ve0	br1483	8	32	LLC							Enabl	

Enter the web page *WAN* → *ATM Settings* and select the QoS parameters associated to that PVC:

**TECOM ADSL Router**

**ATM Settings**

This page is used to configure the parameters for the ATM of your ADSL Router. Here you may change the setting for VPI, VCI, QoS etc ...

VPI: 8 VCI: 32 QoS: UBR  
 PCR: 500 CDVT: 0 SCR: MBS:

Current ATM VC Table:

Select	VPI	VCI	QoS	PCR	CDVT	SCR	MBS
<input checked="" type="radio"/>	8	32	UBR	500	0	---	---

Enter the Web page *Services* → *DHCP Settings* to disable your modem as DHCP Server.

**TECOM ADSL Router**

**DHCP Settings**

This page be used to configure DHCP Server and DHCP Relay.

DHCP Mode:  None  DHCP Relay  DHCP Server

## 2.2.4. STATIC SINGLE-PC

Enter the Web page *WAN* → *Channel Config* and fill in all the following fields:

VPI/VCI: associated to that PVC

Encapsulation: LLC

Channel Mode: 1483 Routed

Enable NAPT: Disable

Admin Status: Enable

WAN IP Settings:

Type: Fixed IP

Local IP Address: static IP address provided by your ISP

Remote IP Address: Gateway static IP address

Subnet Mask: subnet mask provided by your ISP

Default Route: Enable

**TECOM ADSL Router**

### WAN Configuration

This page is used to configure the parameters for the channel operation modes of your ADSL Modem/Router.

VPI:  VCI:  Encapsulation:  LLC  VC-Mux Channel Mode:

Enable NAPT:  Admin Status:  Enable  Disable

PPP Settings: User Name:  Password:   
 Type:  Idle Time (min):

WAN IP Settings: Type:  Fixed IP  DHCP  
 Local IP Address:  Remote IP Address:   
 Subnet Mask:  Unnumbered   
 Default Route:  Disable  Enable

Current ATM VC Table:

Select	Inf	Mode	VPI	VCI	Encap	NAPT	IP Addr	Remote IP	Subnet Mask	UserName	DRoute	Status	Actions
<input checked="" type="checkbox"/>	vc0	rt1483	8	32	LLC	Off	172.26.224.172	172.26.224.1	255.255.254.0		On	Enable	

Enter the web page *WAN* → *ATM Settings* and select the QoS parameters associated to that PVC:

**ATM Settings**

This page is used to configure the parameters for the ATM of your ADSL Router. Here you may change the setting for VPI, VCI, QoS etc ...

VPI:  VCI:  QoS:

PCR:  CDVT:  SCR:  MBS:

Current ATM VC Table:

Select	VPI	VCI	QoS	PCR	CDVT	SCR	MBS
<input checked="" type="radio"/>	8	32	UBR	500	0	---	---

Enter the Web page *Services* → *DHCP Settings* to activate your modem as DHCP Server and act as IP address Server into the range or pool address you select:

**DHCP Settings**

This page be used to configure DHCP Server and DHCP Relay.

DHCP Mode:  None  DHCP Relay  DHCP Server

**DHCP Server**  
Enable the DHCP Server if you are using this device as a DHCP server. This page lists the IP address pools available to hosts on your LAN. The device distributes numbers in the pool to hosts on your network as they request Internet access.

LAN IP Address: 192.168.1.1 Subnet Mask: 255.255.255.0

IP Pool Range:  -

Max Lease Time:  seconds (-1 indicates an infinite lease)

Domain Name:

Gateway Address:

DNS option:  Use DNS Relay  Set Manually

DNS1:

DNS2:

DNS3:

## 2.3. OPENING PORTS

With Multi-PC configuration (NAT, public IP address translation into private address), you may be interested in opening some port to make use of any specific application.

Enter the Web page *Services* → *Firewall* → *Port Forwarding*, and select the Protocol, IP address and ports you wish to open:

**TECOM ADSL Router**

**Port Forwarding**

Entries in this table allow you to automatically redirect common network services to a specific machine behind the NAT firewall. These settings are only necessary if you wish to host some sort of server like a web server or mail server on the private local network behind your Gateway's NAT firewall.

Port Forwarding:  Disable  Enable

Protocol:  Comment:   Enable

Local IP Address:  Local Port:  -

Remote IP Address:  Public Port:  -

Interface:

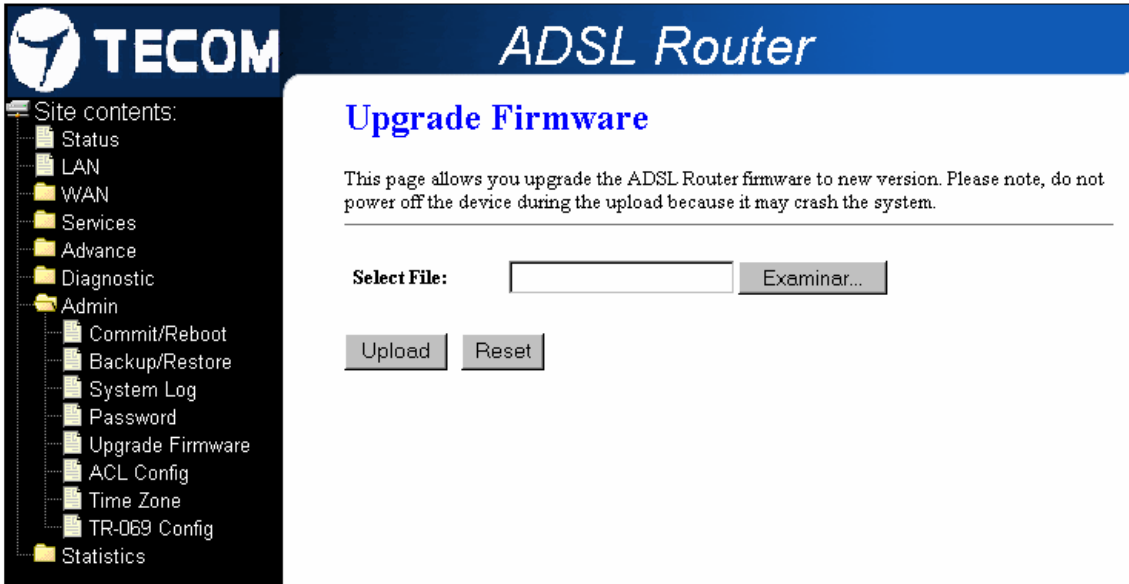
**Current Port Forwarding Table:**

Select	Local IP Address	Protocol	Local Port	Comment	Enable	Remote Host	Public Port	Interface
<input type="checkbox"/>	192.168.1.33	TCP-UDP	21		Enable		---	vc0

Field	Description
<b>Enable Port Forwarding</b>	Check this item to enable the port-forwarding feature.
<b>Protocol</b>	There are 3 options available: TCP, UDP and Both.
<b>Enable</b>	Check this item to enable this entry.
<b>Local IP Address</b>	IP address of your local server that will be accessed by Internet.
<b>Port</b>	The destination port number that is made open for this application on the LAN-side.
<b>Remote IP Address</b>	The source IP address from which the incoming traffic is allowed. Leave blank for all.
<b>External Port</b>	The destination port number that is made open for this application on the WAN-side
<b>Interface</b>	Select the WAN interface on which the port-forwarding rule is to be applied.

## 2.4. UPGRADE FIRMWARE

To upgrade the Firmware version in your modem, enter the Web page *Admin* → *Firmware Upgrade* and go to the path where the firmware file is located pushing the "Examinar" button:



Once you have selected the firmware file, press the button “Upload” to start with the upgrading procedure.

**IMPORTANT: DO NOT POWER OFF THE DEVICE DURING THE UPLOAD BECAUSE IT MAY CRASH THE SYSTEM**

After the firmware file upgrade, the modem will restart automatically.

When the upgrade process will be finished, you will see the frontal LED indicators in green.