

Wireless USB Adapter Comfort without limits

Quick start guide



Introduction

This guide describes Movistar's Wireless USB Adapter installation and configuration process. This adapter is dual so, you will be able to connect to wireless networks in 2,4 Ghz and 5 Ghz frequency bands.

Please, follow the guide indications step by step.

To perform advanced operations or get more details please, refer to the user's manual included in the "See documentation" section of the installation CD.

Package content



(1) Wireless USB Adapter



(2) Craddle



(3) Installation CD



(4) Quick start guide

Further information in the user's manual: Chapter 1

Installation on the computer

In the following lines the Movistar USB Wireless Adapter installation process is detailed. Please, follow the steps indicated.

If you have already installed previously a USB wireless adapter, it is necessary to uninstall before starting Movistar's USB Wireless Adapter installation process.



Check that the Adapter is not plugged in the computer

1. Insert the installation CD provided with the equipment



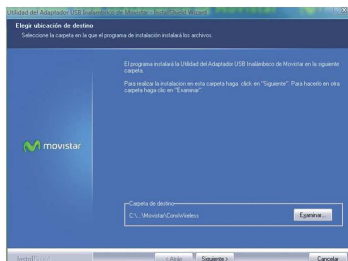
The CD menu will be launched automatically. If the computer requests confirmation to run the CD, choose the option "Run AUTORUN.EXE" and then click in "Permit".

If the application is not launched automatically, it can be ran manually from the AUTORUN.EXE file included in the root folder of the CD.

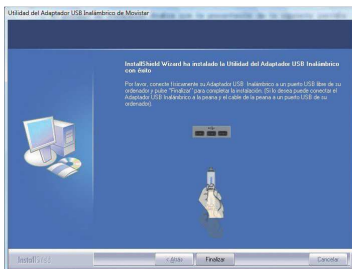
2. Select the option **"Install drivers and utility"**.



3. Movistar USB Wireless Adapter installation process will start.
- Then, follow step by step the setup wizard indications.



4. Connect the adapter Physically to the USB Port at the moment Indicated by the setup wizard.
- Press **"Finalizar"** to complete the installation. After this, the adapter and the utility are installed in your PC.



Configuration

Before establishing the connection with your Wireless USB Adapter to your network:



1. Be sure that the wireless indication light in your Router or Access point is on.
2. Check that you have the network name (SSID) and the network key so, that connection can be established. This information can be found in the sticker situated on the bottom panel of the router or, in case they were changed, in the router configuration.

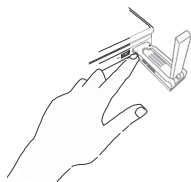
Once previous steps are passed, in the following lines is described, in 2 different ways, how to connect your adapter to the wireless network of your router, by wireless easy configuration method (WPS) or by the utility of the adapter's configuration.

To connect by WPS

Press WPS button of your router during 10 seconds around.


After that press WPS button of your Wireless USB Adapter during 3 seconds.

You will have 2 minutes maximum to get the connection, successfully.



To connect by the utility

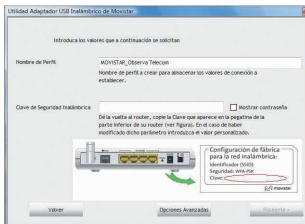
Follow the following steps:

1. Run Movistar's Wireless USB Adapter utility clicking in Start/Programs/ Movistar Wireless USB or click in the icon  in the widows task bar. Then the following screen is shown:

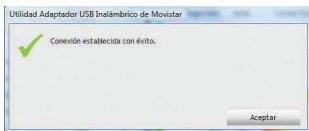


In case you have changed the factory wireless configuration, enter the customized values. Then press “Aplicar”.

2. Click on network (SSID) you want to connect. **If you haven't changed the factory wireless configuration**, enter wireless security key that appears in the sticker on the bottom panel of the router, as follows:



3. To finish the process the following message will appear indicating that the connection has been established properly.



Congratulations!, you have completed Movistar's Wireless USB Adapter installation and configuration. Now, you can enjoy your wireless connection.

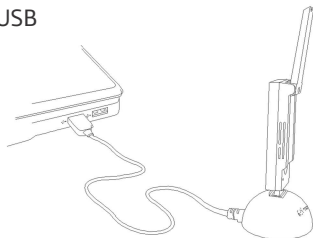
To perform advanced operation or get more detail information, refer to the user's manual that is included in the section “See documentation” of the Installation's CD.

In case your router supports the wireless easy configuration method (WPS), you can easily connect to your wireless network by pushing the WPS button in your router and then Movistar Wireless USB Adapter button.

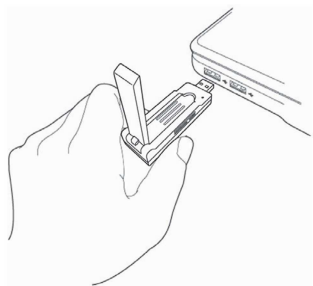
Wireless USB Adapter position

To optimize the Wireless USB Adapter connection, be sure that the antenna is in the right position, as it is shown as follow:

1. If you connect your Wireless USB Adapter to your PC trough the cradle:



2. If you connect Wireless USB Adapter directly to your PC:



Helpdesk Service

Helpdesk service is available through phone and also in internet. For Further information, refer to the user's manual in the documentation of the CD.

You can find all the information about ADSL in **Ayuda** section of our web:

www.movistar.es

Movistar's helpdesk center

Home users: 1004



Soho and professional: 900 10 10 10

Customer service for the equipment's warranty execution:

902 367 132

Troubleshooting

PROBLEM	CAUSE	SOLUTION
Windows does not detect the Wireless USB Adapter when it is connected.	<ol style="list-style-type: none"> 1. The USB port is damaged. 2. The physical connection has failed. 3. The installation has failed. 4. The adapter is disabled. 	<ol style="list-style-type: none"> 1. Connect the adapter to other USB port. 2. Check if the adapter is correctly connected. When data is being sent or received to or from the access point the light indicator blinks. If the problem persists, reboot your PC. 3. Uninstall the utility and repeat the installation according to the steps described. 4. Enable the adapter confirming the message that appears when the utility is opened.
A warning or an error message appears during the installation process.	<ol style="list-style-type: none"> 1. PC does not have the last OS version. 	<ol style="list-style-type: none"> 1. Upgrade the operating system.
There is not connection with the access point.	<ol style="list-style-type: none"> 1. No wireless coverage. 2. The wireless security key is not valid. 3. Network's name (SSID) invalid. 4. TCP/IP configuration invalid. 5. The signal received is low or the connectivity is limited or nule. 	<ol style="list-style-type: none"> 1. Check if the wireless network access point is available. 2. Check if the wireless key inserted is correct. 3. Check if the SSID chosen corresponds to the demanded. 4. Check the TCP/IP configuration according to the Advanced settings of the utility. For further information check "Pautas Verificación TCP_IP" document you can find in the Documentation folder of the CD provided or in the documentation options in the installation menu. 5. Move the adapter some centimeters to detect a stronger signal. For further information you can check "Recomendaciones para Redes Inalámbricas" document you can find in Documentation folder of the CD provided or in the documentation options of the Installation menu.

PROBLEM	CAUSE	SOLUTION
IP address is not obtained.	<ol style="list-style-type: none"> 1. The router has not enabled DHCP server option. 2. The security key is invalid. 	<ol style="list-style-type: none"> 1. Access to the router and enable DHCP server option to get the router assign a IP address in assigned range. 2. Check that the correct security key has been inserted.
Resource is in conflict with your Windows system.	<ol style="list-style-type: none"> 1. Other equipment comes into conflict with your Wireless USB Adapter. 	<ol style="list-style-type: none"> 1. Use the PC properties to identify the E/S port address and the IRQ values. Select the alternative configuration for the E/S base address or IRQ values. If the equipment in conflict with the wireless adapter is identified, you can modify the E/S address or IRQ instead of changing the Wireless USB Adapter.
Wireless connection is on and domestic network performance is correct, but there's no access to internet.	<ol style="list-style-type: none"> 1. IP configuration is not correct. 2. Router or access point has not enabled advanced functions of packet filtering or access control. 	<ol style="list-style-type: none"> 1. Verify that your wireless client TCP/IP configuration corresponds to the same sub-network than your IP LAN wireless access point. Use the commands "ping" and "ipconfig" to check TCP/IP connection. 2. Check your wireless router or access point configuration.
Some applications that require Internet service access available do not work properly.	<ol style="list-style-type: none"> 1. Some applications need to open ports in the firewall to permit the communication. 	<ol style="list-style-type: none"> 1. Open the ports required in your wireless ADSL router.
Conflict in the connection through the WPS security.	<p>The adapter is connected in a USB 3.0 port which usually has the following silkscreen:</p> 	<p>Change the adapter to a USB 2.0 port which usually has the following silkscreen:</p> 

Deseamos agradecerte la confianza depositada en Movistar al haber adquirido uno de nuestros equipos; te informamos de que para cualquier aclaración, consulta o reclamación, puedes llamar de forma gratuita a:

- Línea de Atención Personal (1004)
- Centro de Atención al Cliente Pymes y Profesionales (900 10 10 10)
- Centro de Atención de Empresas (900 12 09 00)

Donde serás atendido por nuestros asesores, o si lo prefieres, visita la página comercial de Movistar:

www.movistar.es

Para obtener información sobre el Servicio Postventa, consulta la Tarjeta de Garantía del Equipo.

Por último indicarte que, para reclamaciones por escrito referidas a esta venta, puedes dirigirte a Telefónica de España S.A.U, Gran Vía 28, 28013 Madrid.

Environmental recycling

Do not dispose the Wireless USB Adapter with your normal household waste. Ask your local authority about the opportunities available to dispose correctly and avoid damages to the environment. Always comply with the legal regulations regarding this matter.

All transgressors will be prosecuted.

The cardboard box, plastic packaging and the device can be recycled according to the legal rules in Spain with regards to recycling matters.



The cross symbol over the container that can be found printed on the device means, that when the equipment has arrived to the end of its lifespan, it must be transferred to a special collection centre, and its processing must be separated from the household waste.

Agreement Declaration

Name or corporate name:

OBJETIVOS Y SERVICIOS DE VALOR AÑADIDO, S.L.

Address: C/ Monte Esquina 28, 1º dcha. 28010 Madrid

Telephone: 902 367 132

C.I.F.: B-83488676



Observa Telecom

We declare under our exclusive responsibility that the product: Wireless USB Adapter 11n

Brand: Telefónica

Fabricante: OBSERVA TELECOM, S.L.

Manufacture country: China

Model: EW-7733UND

HW version: 1.0

Conforms with the technical specifications that can be applied at this date according the European Parliament directive 99/5 of March 9th 1999 council included in the Spanish Legislation through RD1890/2000, the 20th November 2000 and in particular with:

EN 300 328 V1.7.1(2006-10)

Electromagnetic compatibility and Radio spectrum Matters (ERM); Wide-band transmission systems; Data transmission equipment operating in the 2,4 GHz ISM band and using wide band modulation techniques; Harmonized EN covering essential requirements under article 3.2 of the R&TTE Directive.

EN 301 893 V1.6.1(2011-11)

Broadband Radio Access Networks (BRAN); 5 GHz high performance RLAN; Harmonized EN covering the essential requirements of article 3.2 of the R&TTE Directive.

EN 55022:2010(Class B)

Information technology equipment - Radio disturbance characteristics - Limits and methods of measurement.

EN 55024:2010

Information technology equipment - Immunity characteristics - Limits and methods of measurement.

EN 61000-3-2:2006/A1:2009/A2:2009

Electromagnetic compatibility (EMC). Limits. Limits for harmonic current emissions (equipment input current ≤ 16 A per phase).

EN 61000-3-3:2008

Electromagnetic compatibility (EMC). Limits. Limitation of voltage changes, voltage fluctuations and flicker in public low-voltage supply systems, for equipment with rated current ≤ 16 A per phase and not subject to conditional connection.

EN 301 489-1 V1.8.1(2008-04)

Electromagnetic compatibility and Radio spectrum Matters (ERM); Electro-Magnetic Compatibility (EMC) standard for radio equipment and services; Part 1: Common technical requirements.

EN 301 489-17 V2.1.1(2009-05)

Electromagnetic compatibility and Radio spectrum Matters (ERM); ElectroMagnetic Compatibility (EMC) standard for radio equipment; Part 17: Specific conditions for Broadband Data Transmission Systems.

EN 60950-1:2006+A11:2009

Information technology equipment - Safety -- Part 1: General requirements.

EN 62311(2008-11)

Assessment of electronic and electrical equipment related to human exposure restrictions for electromagnetic fields (0 Hz - 300 GHz).

Conforms with Energy efficiency directive ErP 2009/125/CE and 278/2009 regulation according to ecodesign requirements for products are related to the energy.

Conforms also with RD-208/2005 (2002/95 Directive) about electrical and electronic equipments and the waste management.

Madrid, on July 11st, 2012

Signed. Vicente Fernández Bueno.
General Manager



Use restriction can exist in European Union, except in Spain.

Glossary

ADSL (Asymmetric Digital Subscriber Line):

Consists on a digital line for the high speed Internet access.

Wireless security key:

Wireless network encryption code that permits to protect your connection from unauthorized users.

IEEE 802.11n

Standard wireless network working that improve the performance, giving an important increasing in the maximum transmission speed of 54 Mbps (Previous standard), to a maximum speed of 600 Mbps.

IEEE 802.11a

This 802.11^a standard use the same base of protocols than the original standard, but operate in 5 GHz band.

MAC:

It's the identifier of the adapter that permits to difference from other devices. From your wireless router you can configure the equipments that have access or not according this identification number.

Puerto:

Physical or logical connection for sending or receiving data. It permits to a program communicates through the Internet.

Servidor DHCP (Dynamic Host Configuration Protocol):

It's a protocol that permits to the network equipment obtain the IP configuration parameters automatically.

SSID (Service Set Identifier):

It's the identifier name of the wireless network that must be selected from the list of networks from the utility.

TCP/IP (Transmission Control Protocol /Internet Protocol):

It's the network protocol set that the Internet is based on and permits the transmission in the network.



Shared, life is better.

Find out more in:

1004 (from your mobile or phone)

www.movistar.es

Our Movistar's shops

Equipment supplied by: C.I.F.: B-83488676
Registration number RE-RAEE: 000334
1.0 version